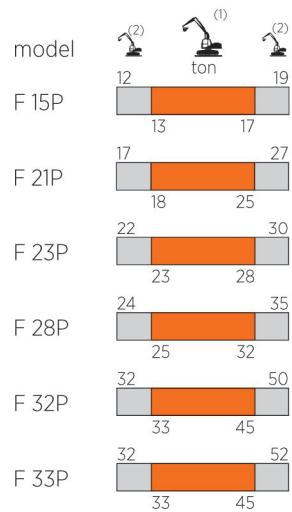
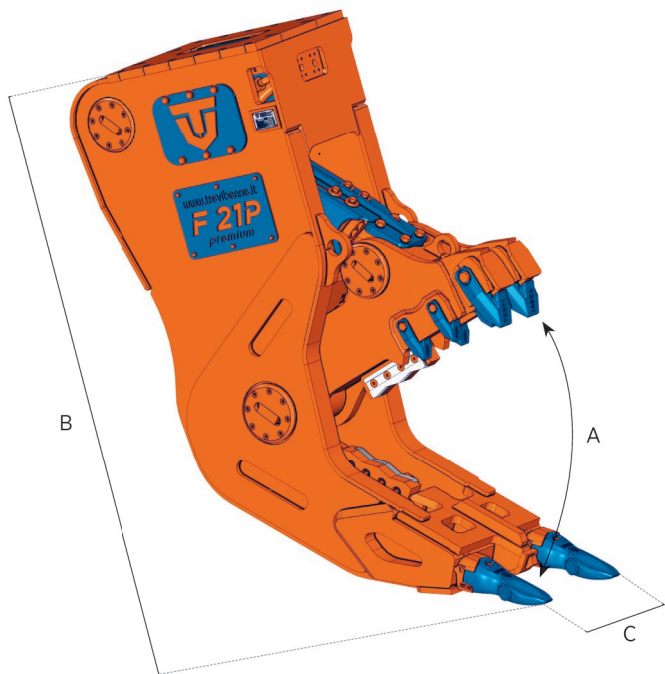




F SERIES



- STATIONARY PULVERIZER
- FRANTUMATORE SECONDARIO
- BROYEUR HYDRAULIQUE
- DEMOLEDOR SECUNDARIO
- STARRE PULVERISIERER



■ (1) Optimum excavator-equipment combination
 Accoppiamento escavatore-attrezzatura ottimale
 Couplage pelle-équipement optimal
 Acoplamiento excavadora-implemento optimal
 Optimale Bagger-Ausrüstung Kombination

■ (2) Possible excavator-equipment combination
 Accoppiamento escavatore-attrezzatura possibile
 Couplage pelle-équipement possible
 Acoplamiento excavadora-implemento posible
 Mögliche Bagger-Ausrüstung Kombination



	F 15P	F 21P	F 23P*	F 28P	F32P*	F33P
kg.	1400	2055	2520	2660	3290	3360
A mm.	670	835	835	890	890	980
B mm.	1600	1845	2215	1955	2365	2080
C mm.	460	540	540	670	670	740
mm.	220	260	260	260	260	260
Ø max mm.	40	45	45	55	55	60
bar	250	250	250	250	250	250
l/min.	130 / 200	180 / 250	180 / 250	230 / 300	230 / 300	250 / 350
bar	/	/	140	/	140	/
l/min.	/	/	20 / 40**	/	25 / 50**	/



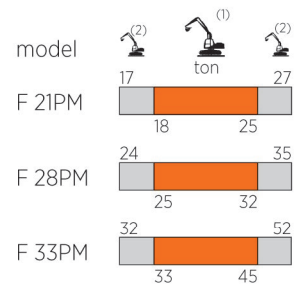
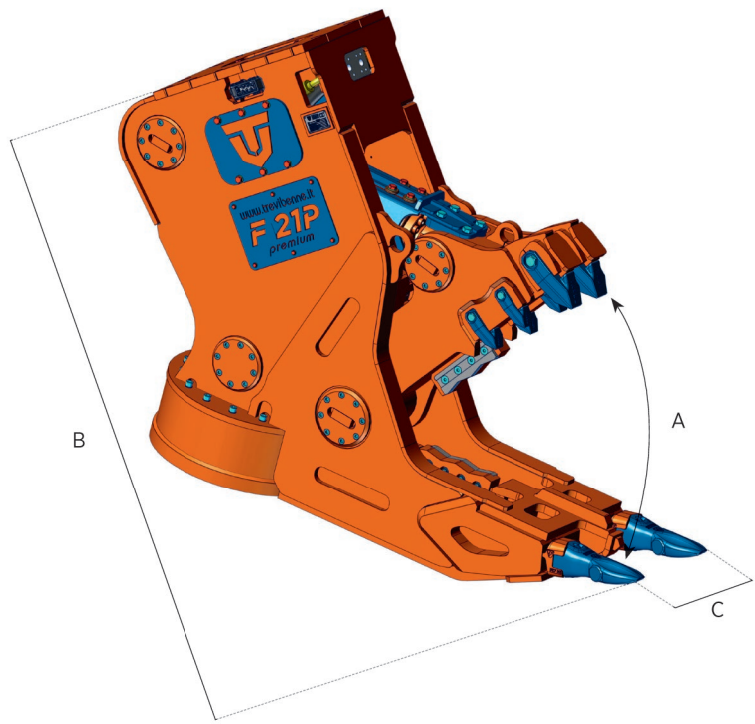
*Model equipped with continuous hydraulic 360° rotation / *Modello fornito con rotazione idraulica continua a 360° / *Modèle équipé de rotation hydraulique à 360° en continu
 *Modelo entregado con rotación hidráulica continua a 360° / *Modell ausgestattet mit hydraulischer kontinuierliche 360° Drehvorrichtung
 **Double motor / **Doppio motore / **Double moteur / **Doble motor / **Doppelmotor



F SERIES



- STATIONARY PULVERIZER WITH MAGNET
- FRANTUMATORE SECONDARIO CON MAGNETE
- BROYEUR HYDRAULIQUE AVEC AIMANT
- DEMOLETOR SECUNDARIO CON IMÁN
- STARRE PULVERISIERER MIT MAGNET



■ (1) Optimum excavator-equipment combination
 Accoppiamento escavatore-attrezzatura ottimale
 Couplage pelle-équipement optimal
 Acoplamiento excavadora-implemento optimal
 Optimale Bagger-Ausrüstung Kombination

■ (2) Possible excavator-equipment combination
 Accoppiamento escavatore-attrezzatura possibile
 Couplage pelle-équipement possible
 Acoplamiento excavadora-implemento posible
 Mögliche Bagger-Ausrüstung Kombination



		F 21PM	F 28PM	F 33PM
	kg.	2480	3250	3970
	mm.	660	770	770
A	mm.	835	890	980
B	mm.	1845	1955	2080
C	mm.	540	670	740
	mm.	260	260	260
	mm.	45	55	60
	bar	250	250	250
	l/min.	180 / 250	230 / 300	250 / 300
	bar	/	/	/
	l/min.	/	/	/

