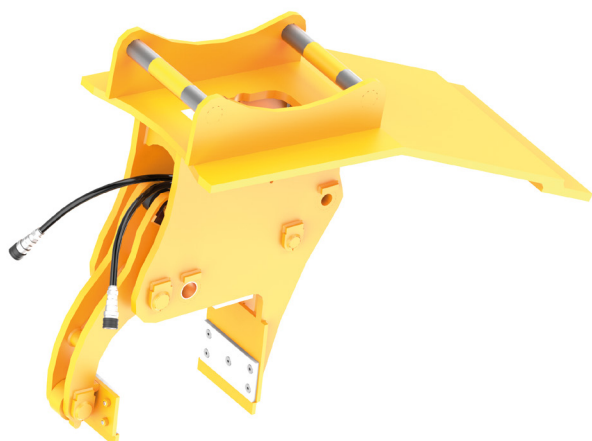




See product video




Attachments / **Railway**

Sleeper Grapple RBE

Small and easy-to-handle sleeper grapple


Sleeper Grapple RBE is a compact and functional grapple for smaller sleeper works. It is equipped with a ballast blade and an angled grip that ensures the ballast blade gets optimal angle, which is extremely useful in tight areas, such as changing sleepers in switches.

Replaceable plates for concrete and wood sleepers are included as standard.

 Do you have any questions? Contact us!

 **Smooth operation**

Small and easy-to-handle

 **High flexibility**

Flexible for tight areas

More information

Features

- Angled grip ensures optimal working angle
- Replaceable plates for concrete and wood sleepers

Detailed description

- Weight: approx. 250 kg (depending on bracket)
- Adjustable grapple opening: 25–240 mm or 135–350 mm
- Ballast blade width: 300 mm or 500 mm

Operating machine

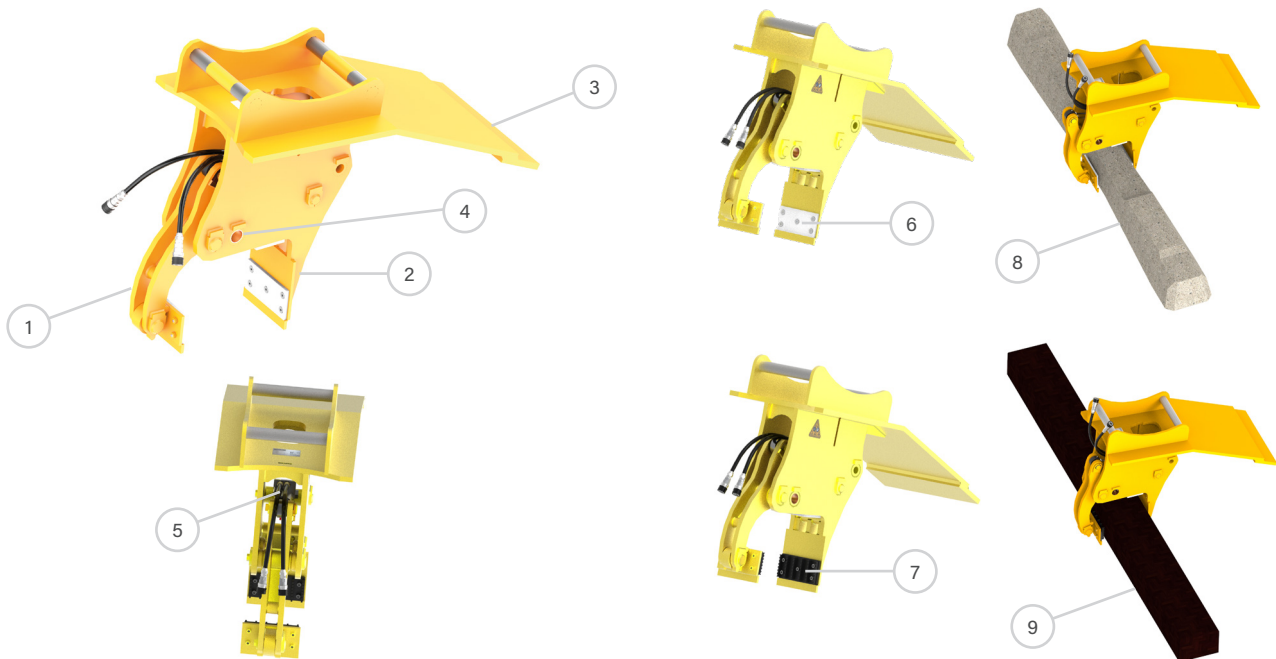
- One double acting hydraulic circuit
- Max pressure: 200 bar
- Oil flow: 30–60 l/min

Accessories

Fully automatic quick coupler systems from all manufacturers

Product	Item number	Bracket	Opening (mm)	Blade width (mm)	Weight (kg)
RBE	158-00107-000-03	S45	350	300	110
RBE	158-00109-000-03	S50	350	300	120
RBE	158-00111-000-30	S60	350	300	130
RBE	158-00107-000-05	S45	350	500	120
RBE	158-00109-000-00	S50	350	500	130
RBE	158-00111-000-00	S60	350	500	140

Product description and accessories



1. Moveable gripping arm

2. Fixed gripping arm

3. Ballast blade

4. Adjustable gripping width

5. Hydraulic cylinder

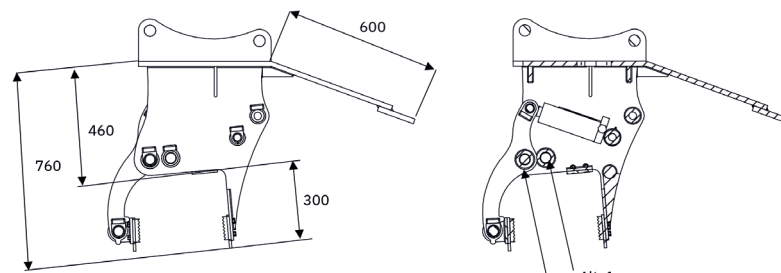
6. Nylon plate for concrete sleepers

7. Steel plate for wooden sleepers

8. Concrete sleeper

9. Wooden sleeper

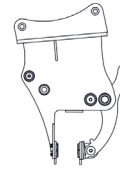
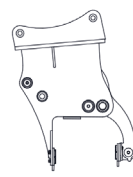
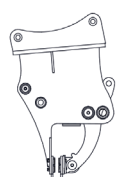
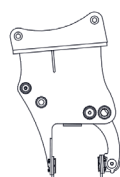
Technical specification



Gripping width (mm)

Alt. 1

Alt. 2



Max 240

Min 25

Max 350

Min 135

Gripping width Alt 1 min - max (mm)	Gripping width Alt 2 min - max (mm)
25 - 240	135 - 350